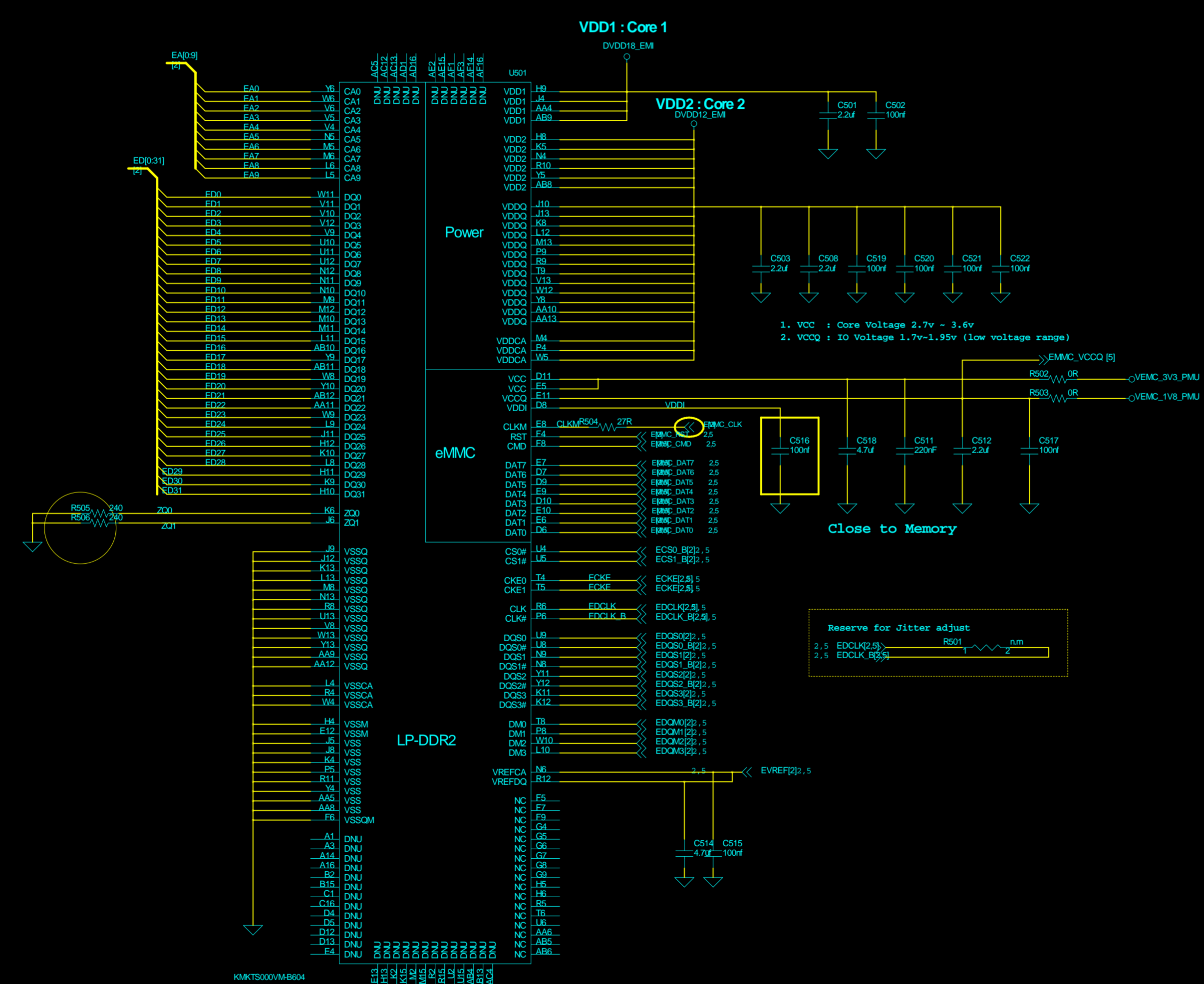


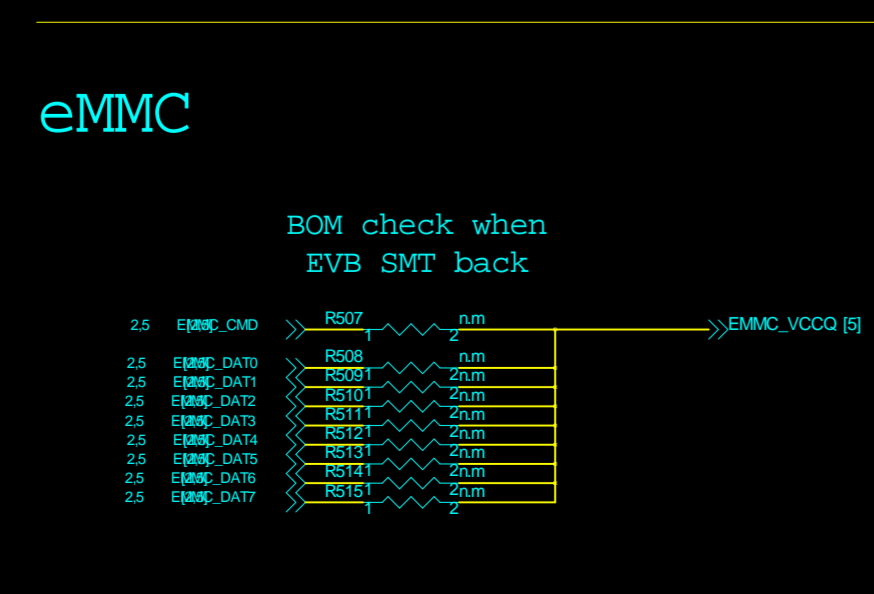


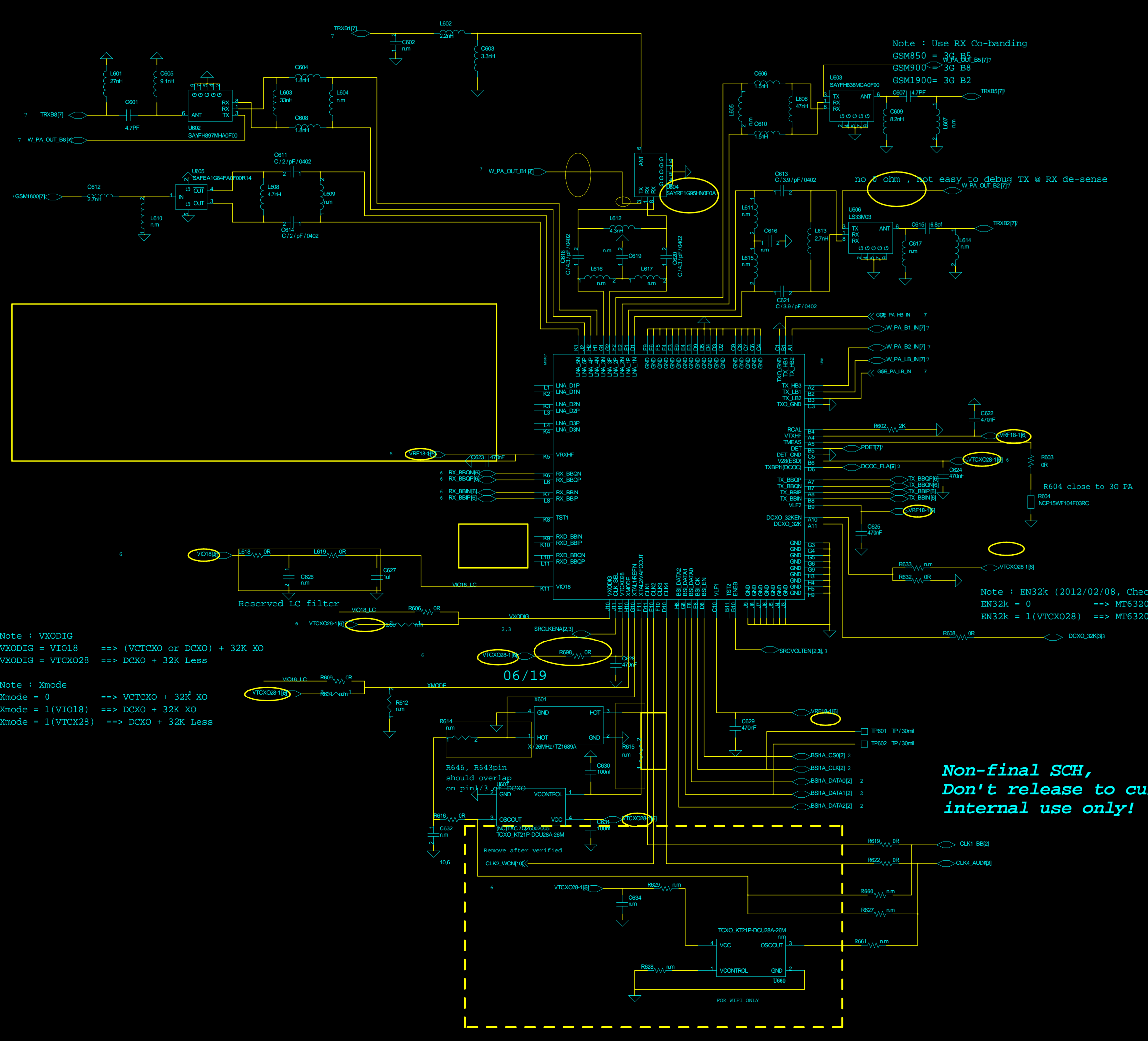
eMMC+LPDDR2

EVT 12/30



16GB EMMC+1GB LPDDR2, 186 ball FBGA, 12*16*1.4mm ,0.5mm pitch





Note : Use RX Co-banding
 GSM850 = 30 B2
 GSM900 = 30 B2
 GSM1900 = 30 B2

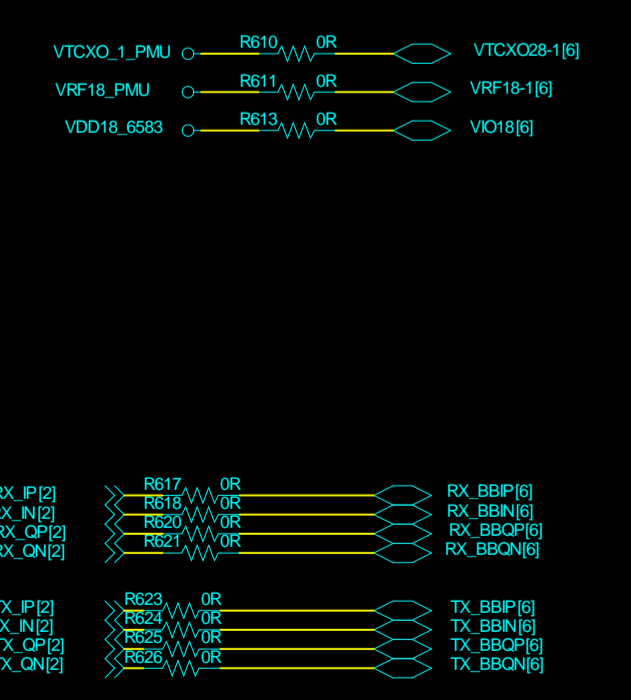
no ohm, not easy to debug TX @ RX de-sense

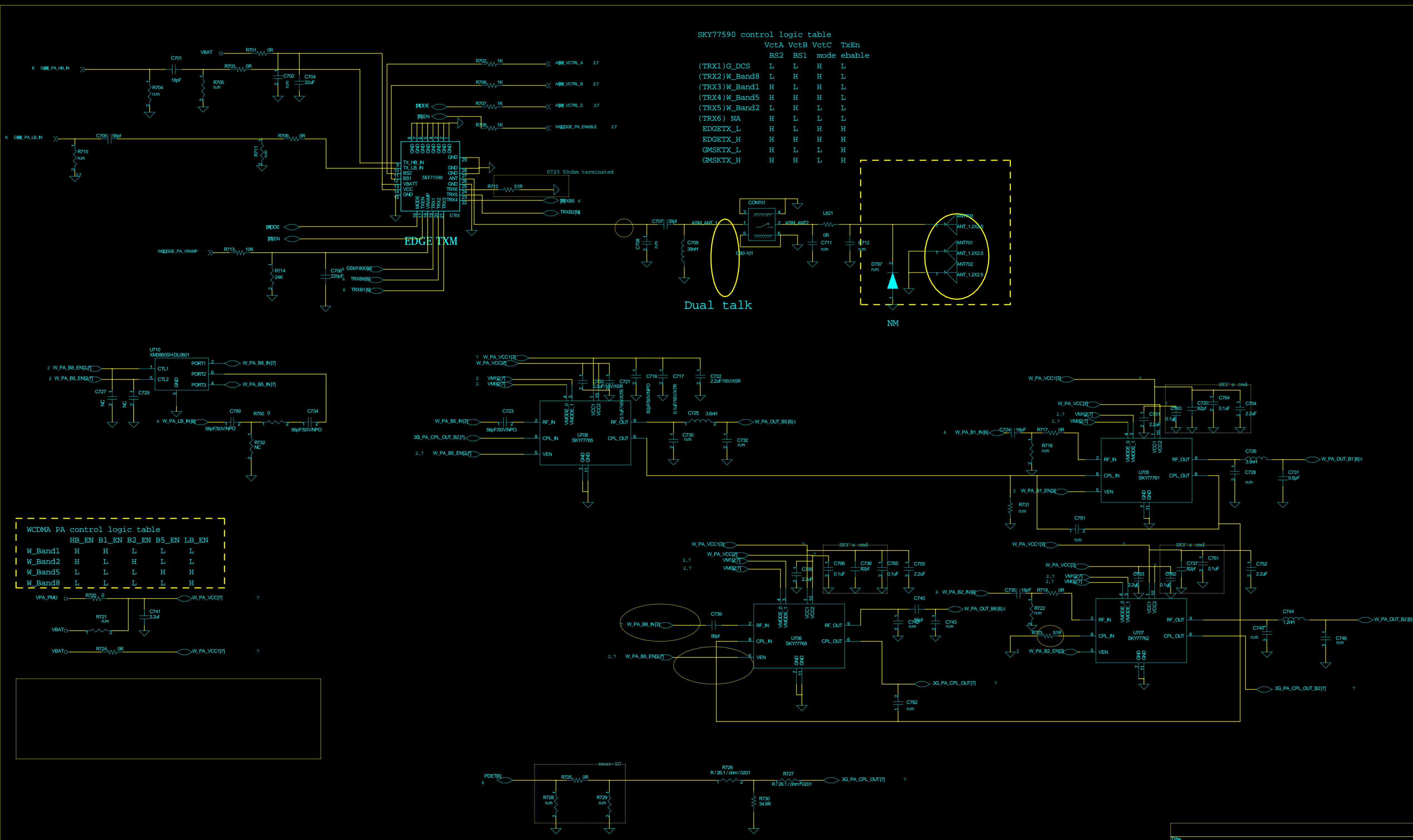
Note : EN32k (2012/02/08, Checked PMU POR)
 EN32k = 0 ==> MT6320 is 32k XO
 EN32k = 1(VTCKX28) ==> MT6320 is 32k Less

Note : VXODIG
 VXODIG = VI018 ==> (VTCKX0 or DCX0) + 32k XO
 VXODIG = VTCKX28 ==> DCX0 + 32k Less

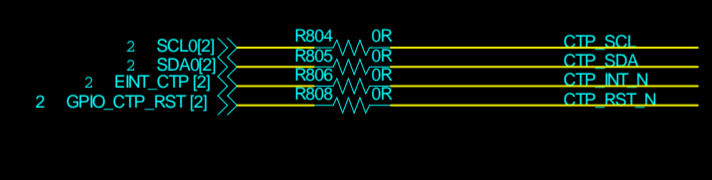
Note : Xmode
 Xmode = 0 ==> VTCKX0 + 32k XO
 Xmode = 1(VI018) ==> DCX0 + 32k XO
 Xmode = 1(VTCKX28) ==> DCX0 + 32k Less

**Non-final SCH,
 Don't release to customer!
 internal use only!**

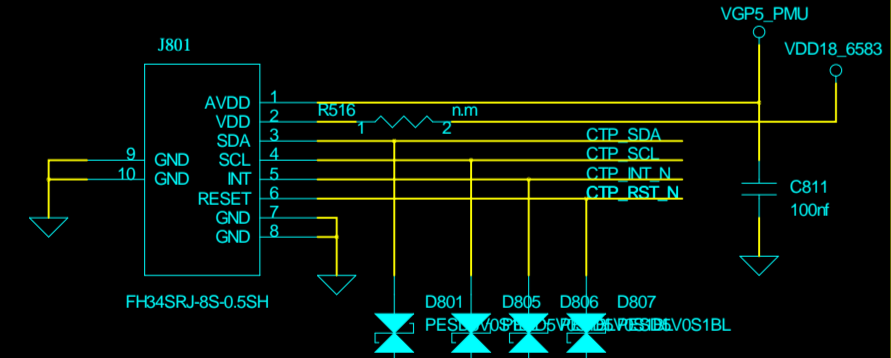




CTP



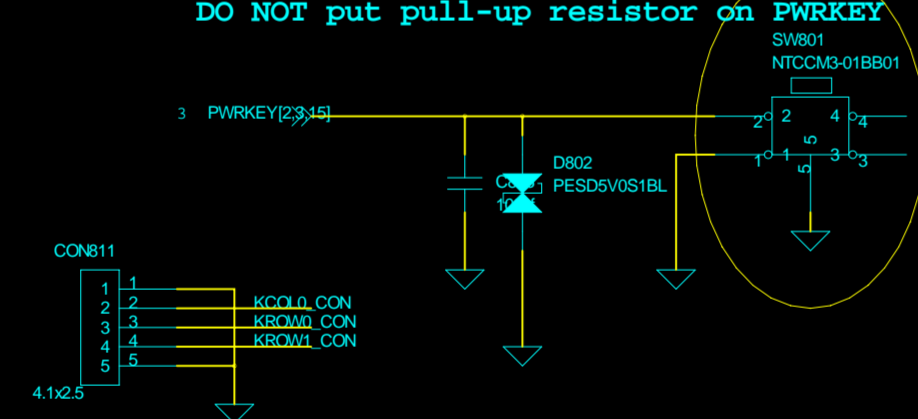
Follow A2107 , need to be confirmed by ME



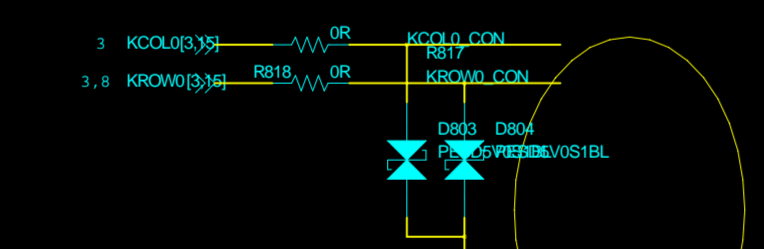
VPFS_PMW for Touch 2.8V, voltage domain for control signals should be changed to 2.8V

Power Key

DO NOT put pull-up resistor on PWRKEY

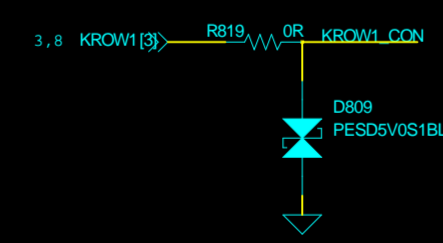


Volume Up

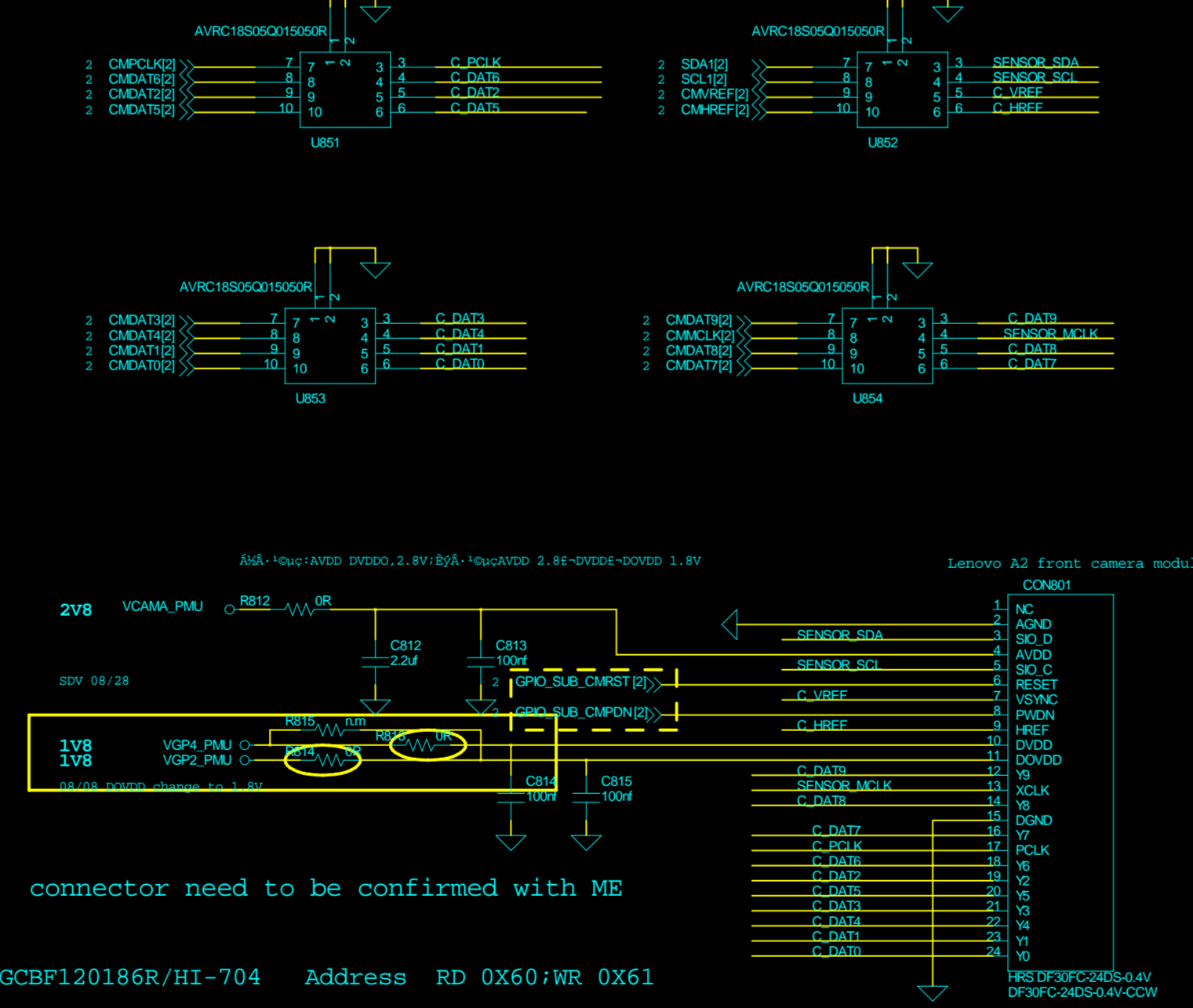


EVT 10/27 volume up/down key changed

Volume Down

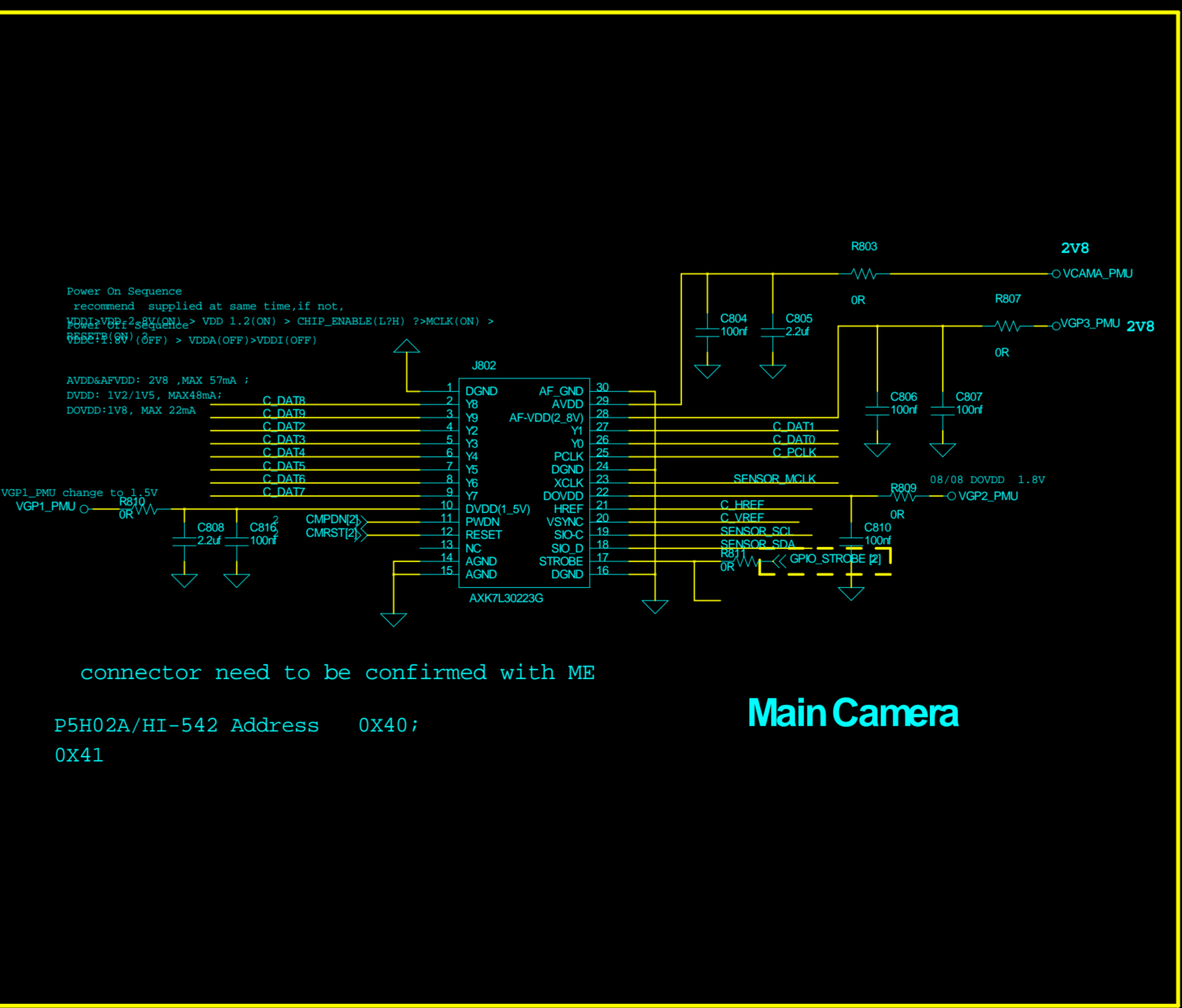


Sub Camera



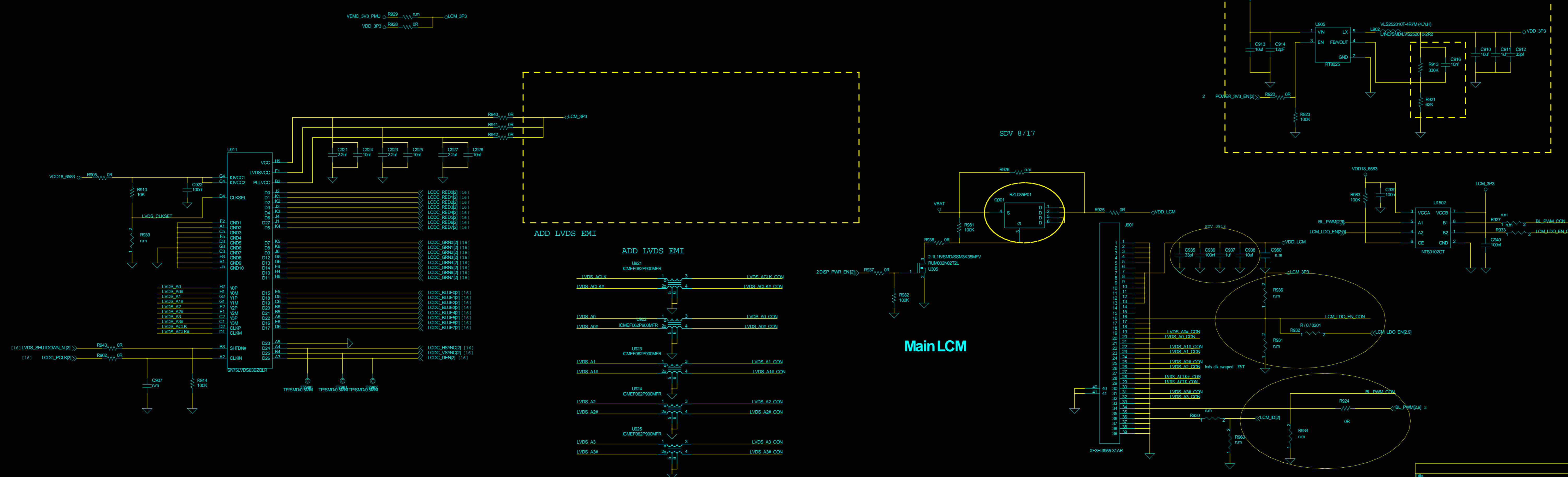
connector need to be confirmed with ME

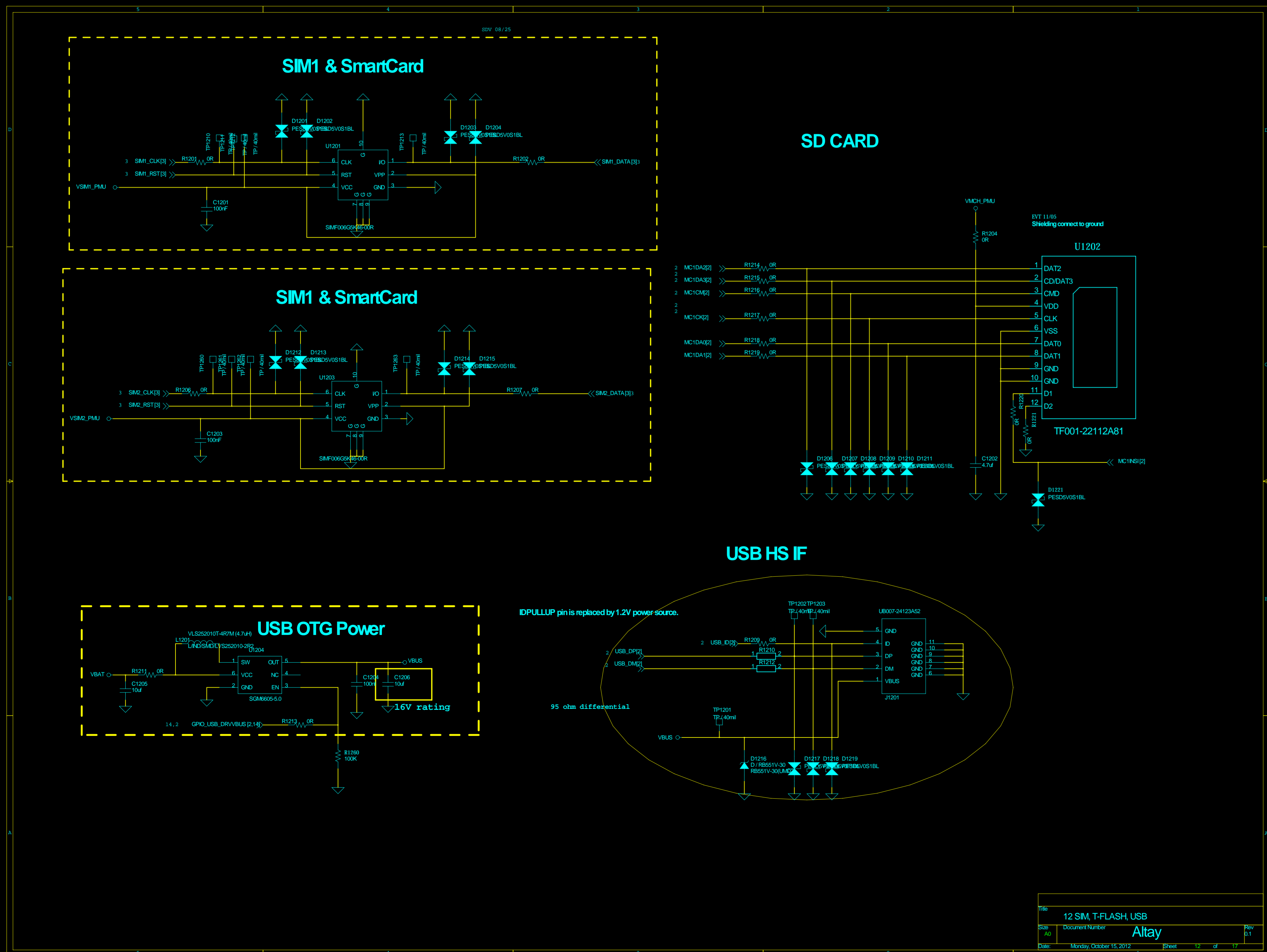
GCBF120186R/HI-704 Address RD 0x60:WR 0x61

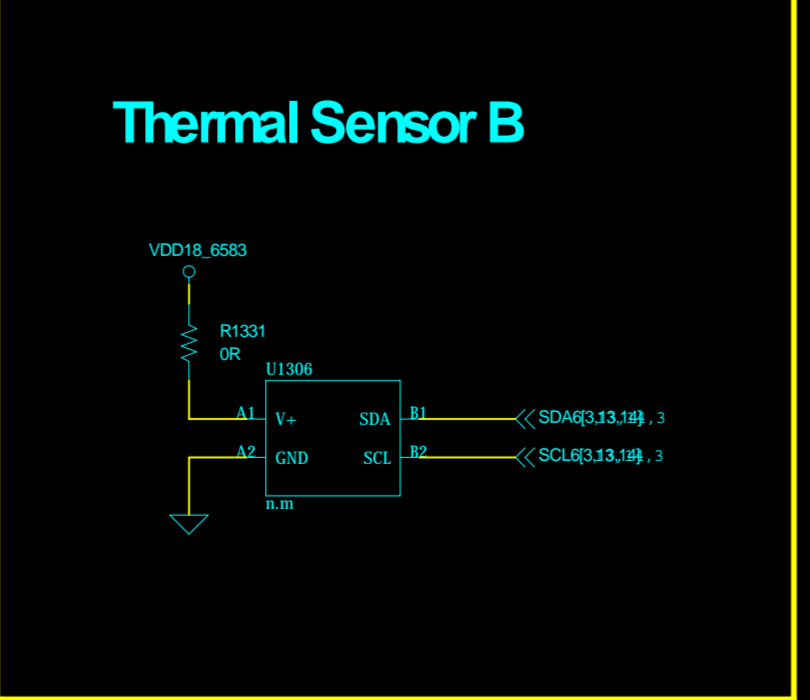
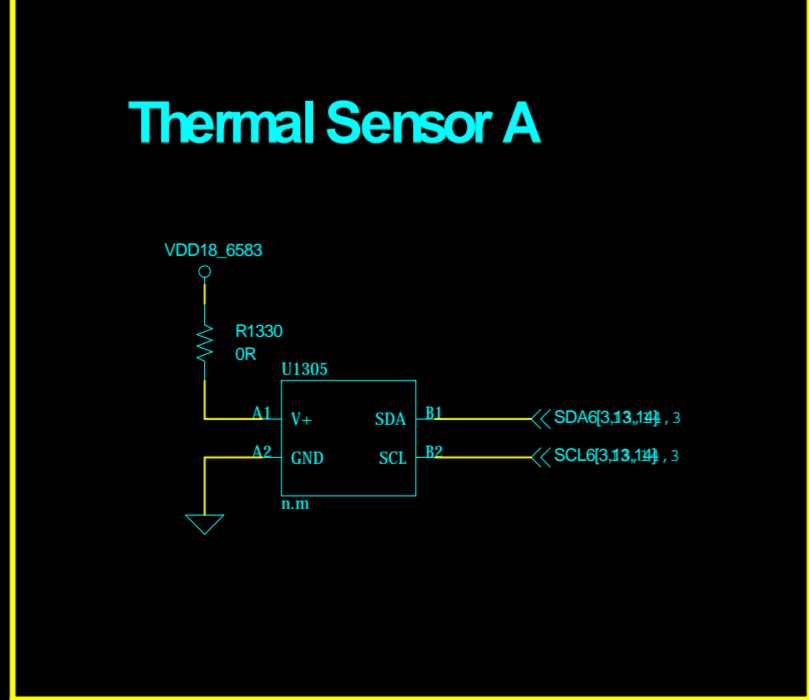
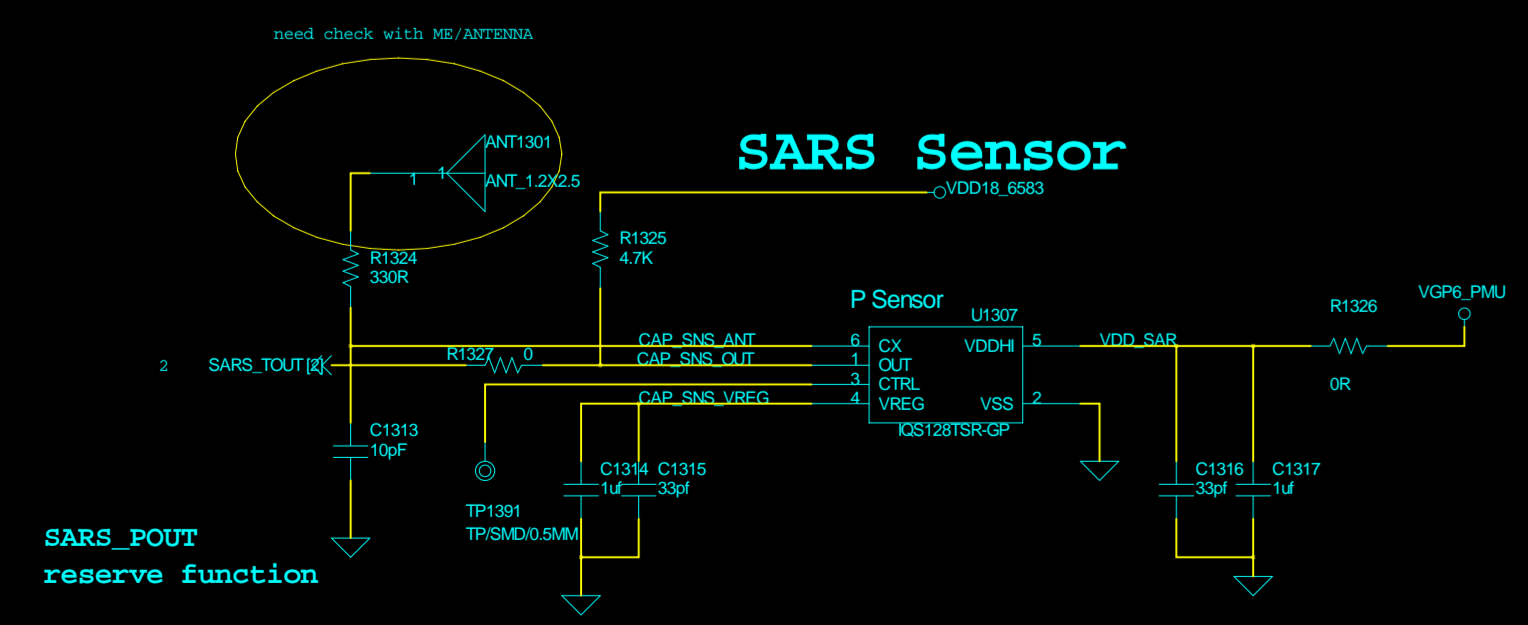
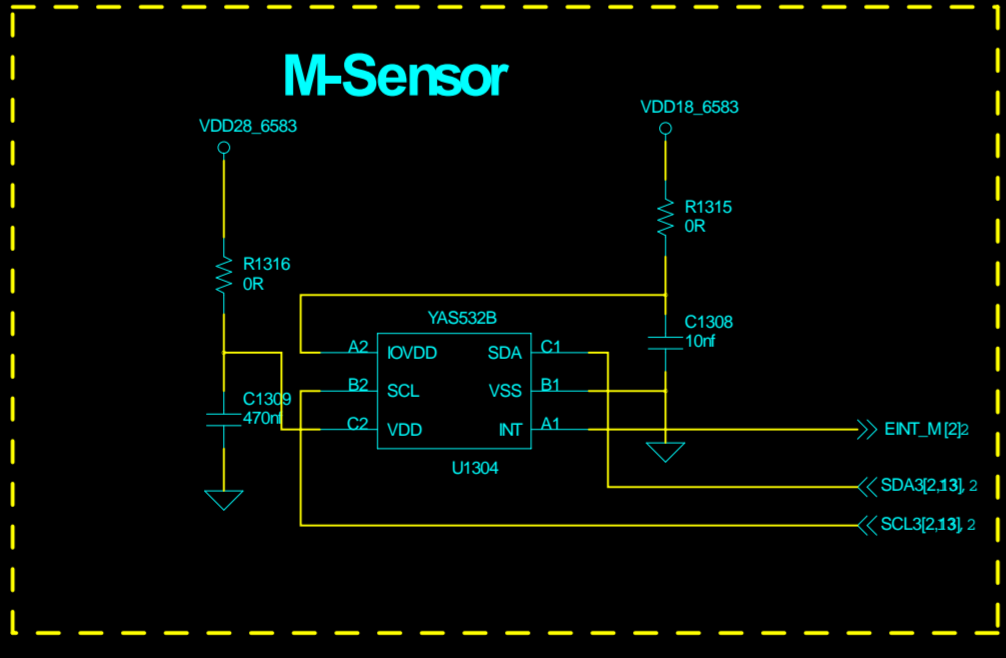
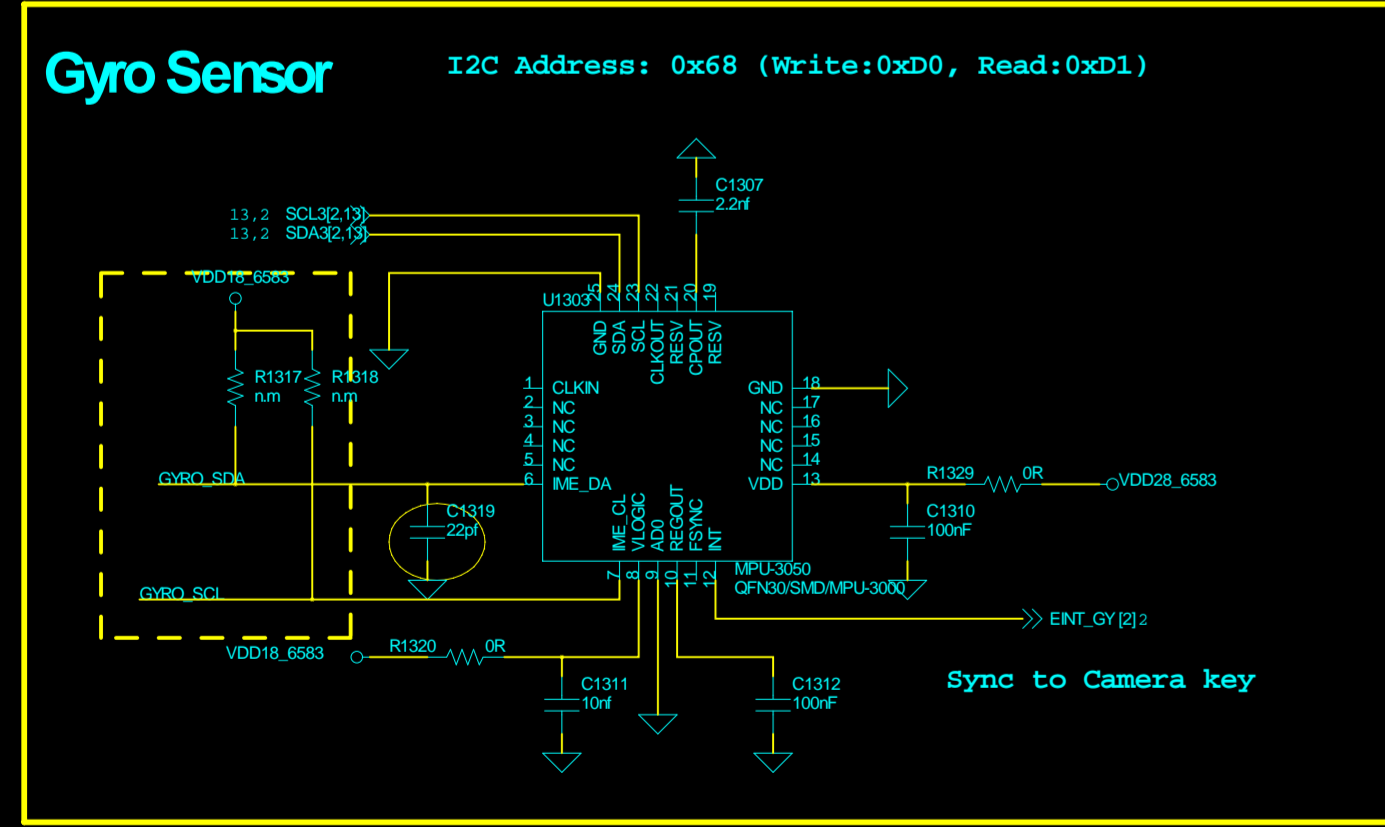
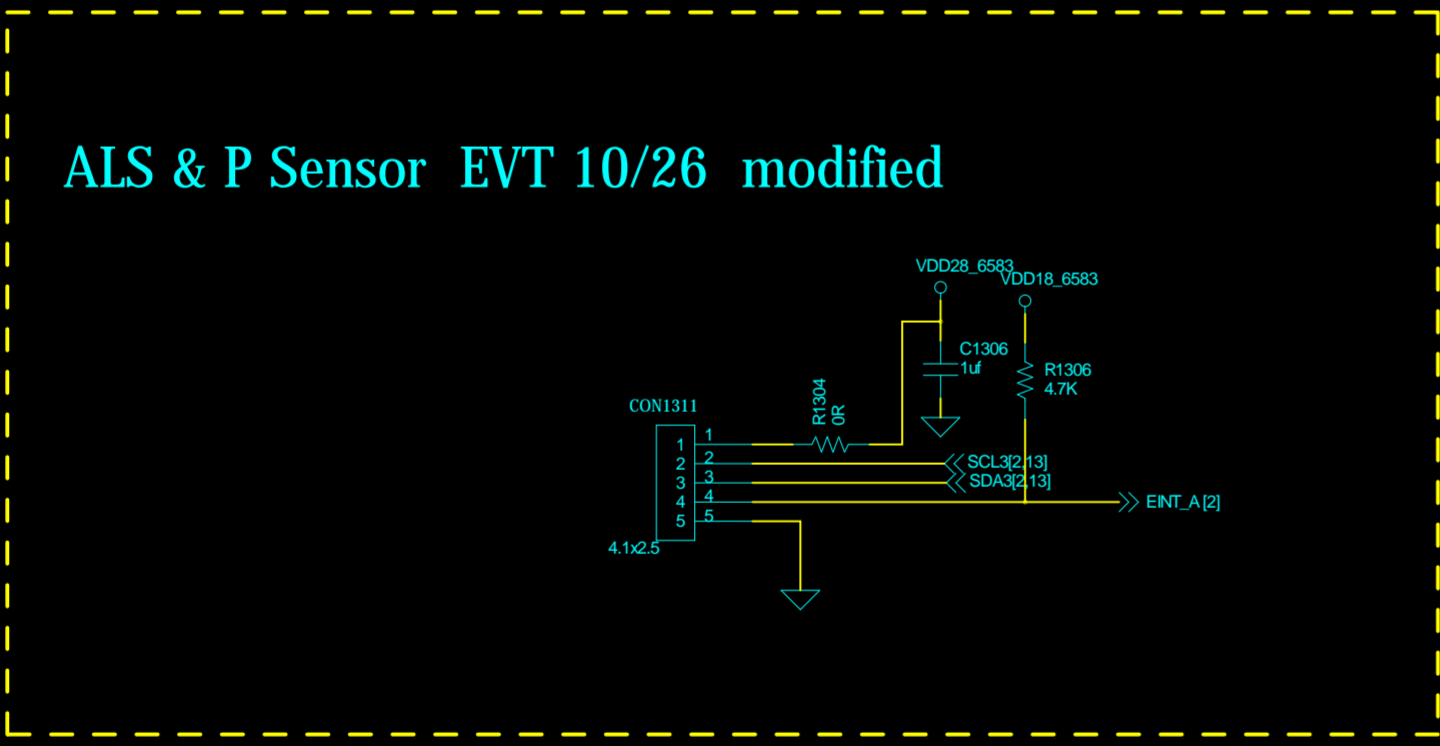
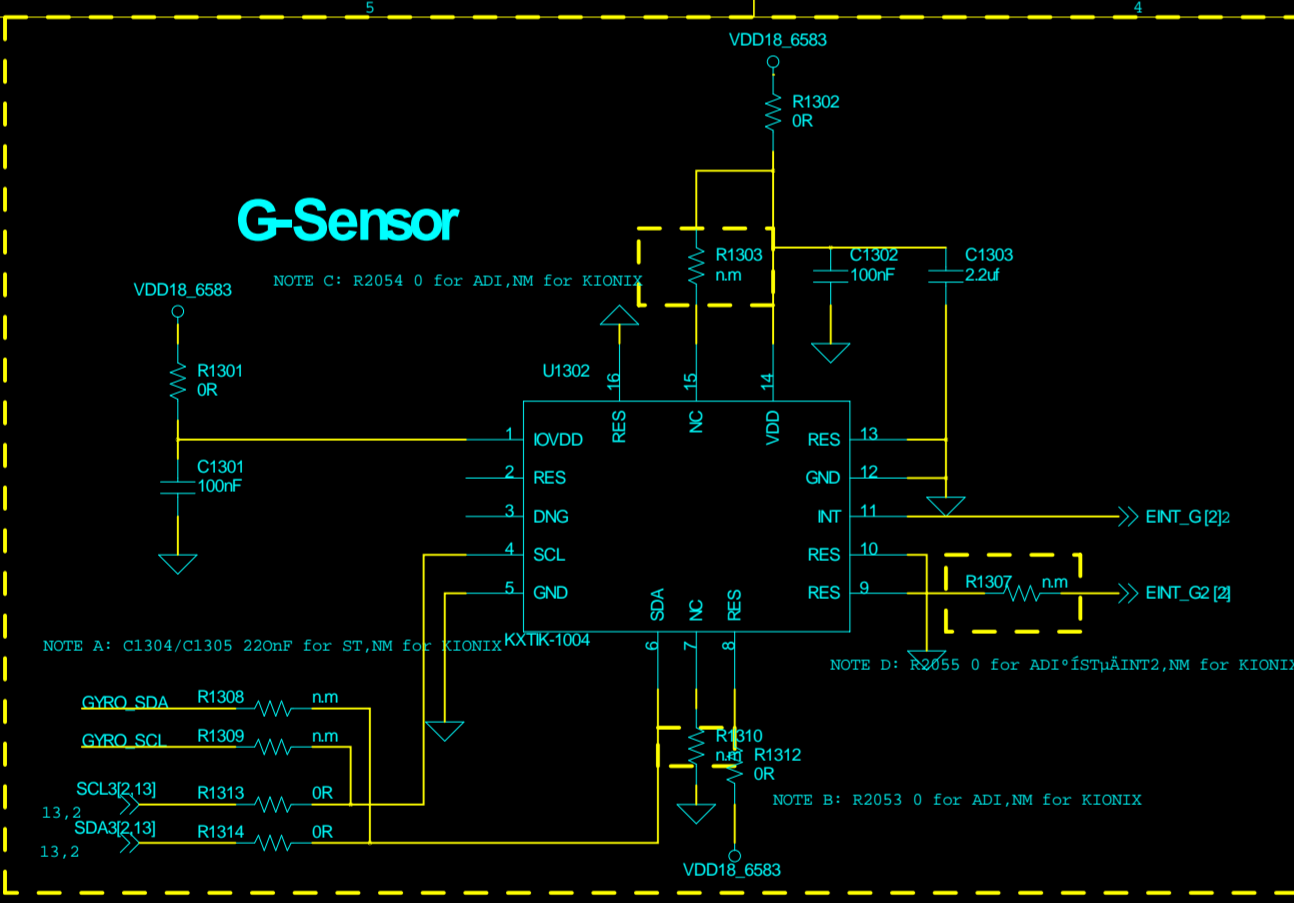


connector need to be confirmed with ME
P5H02A/HI-542 Address 0x40:0x41

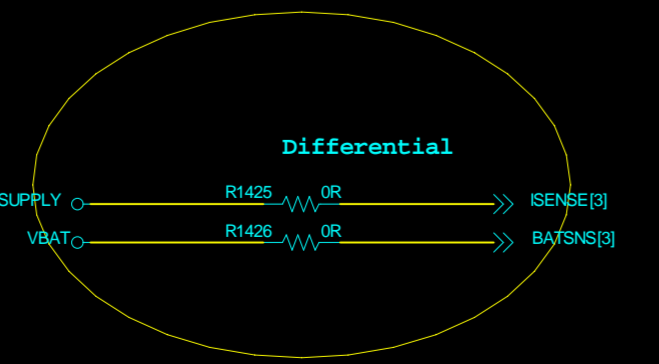
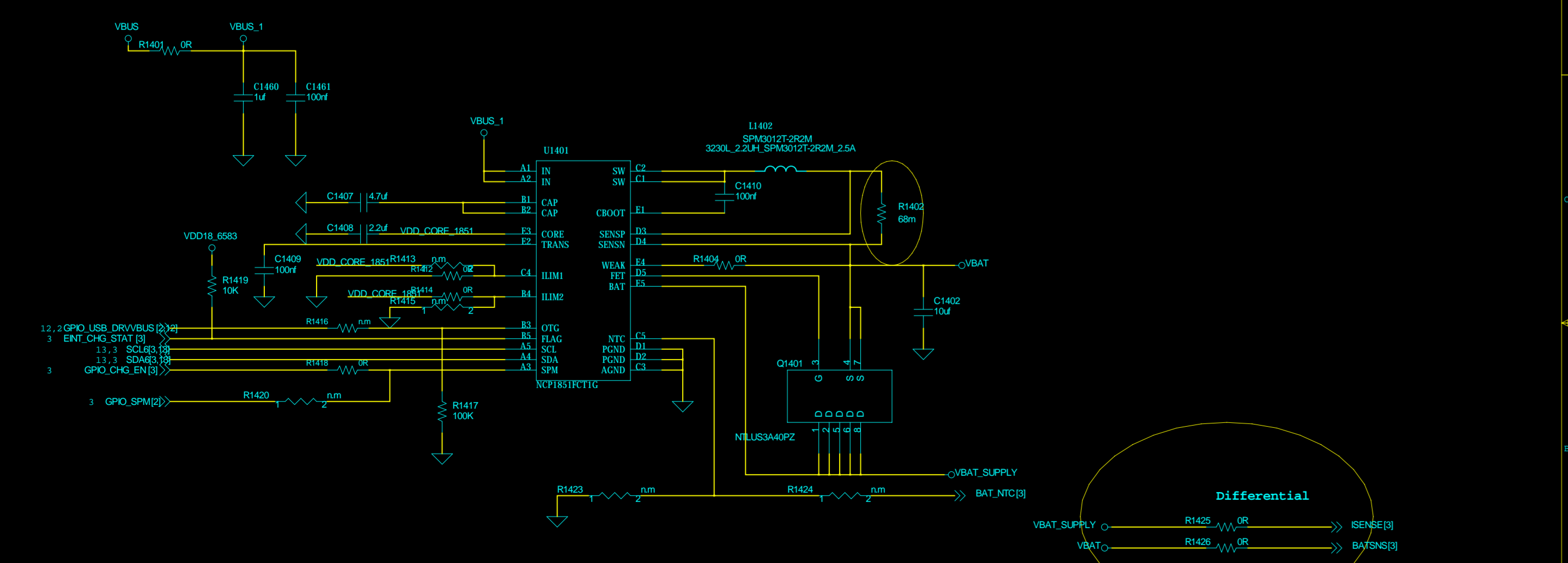
Main Camera

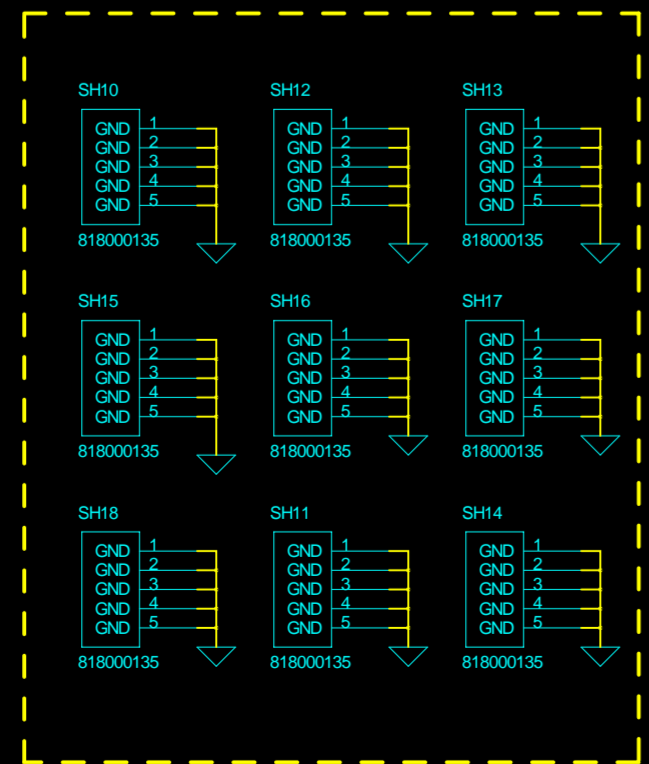
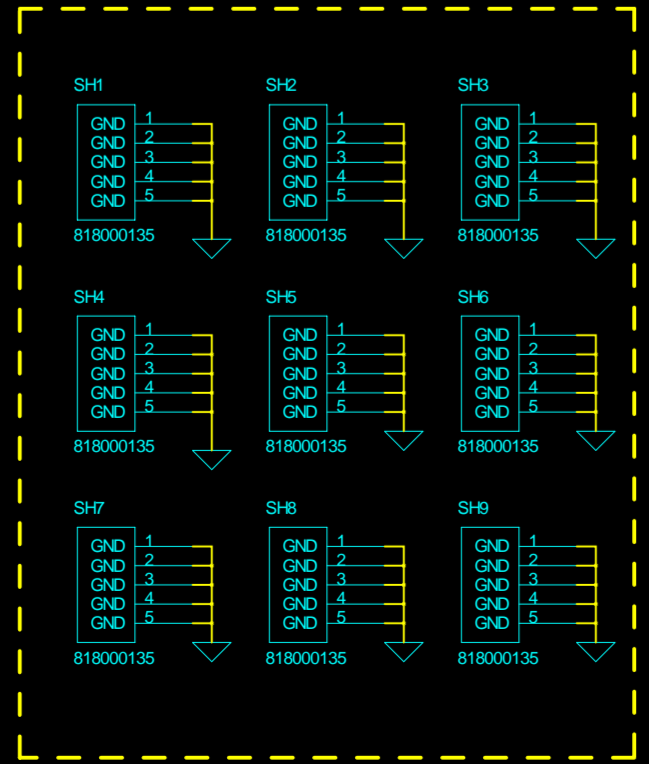
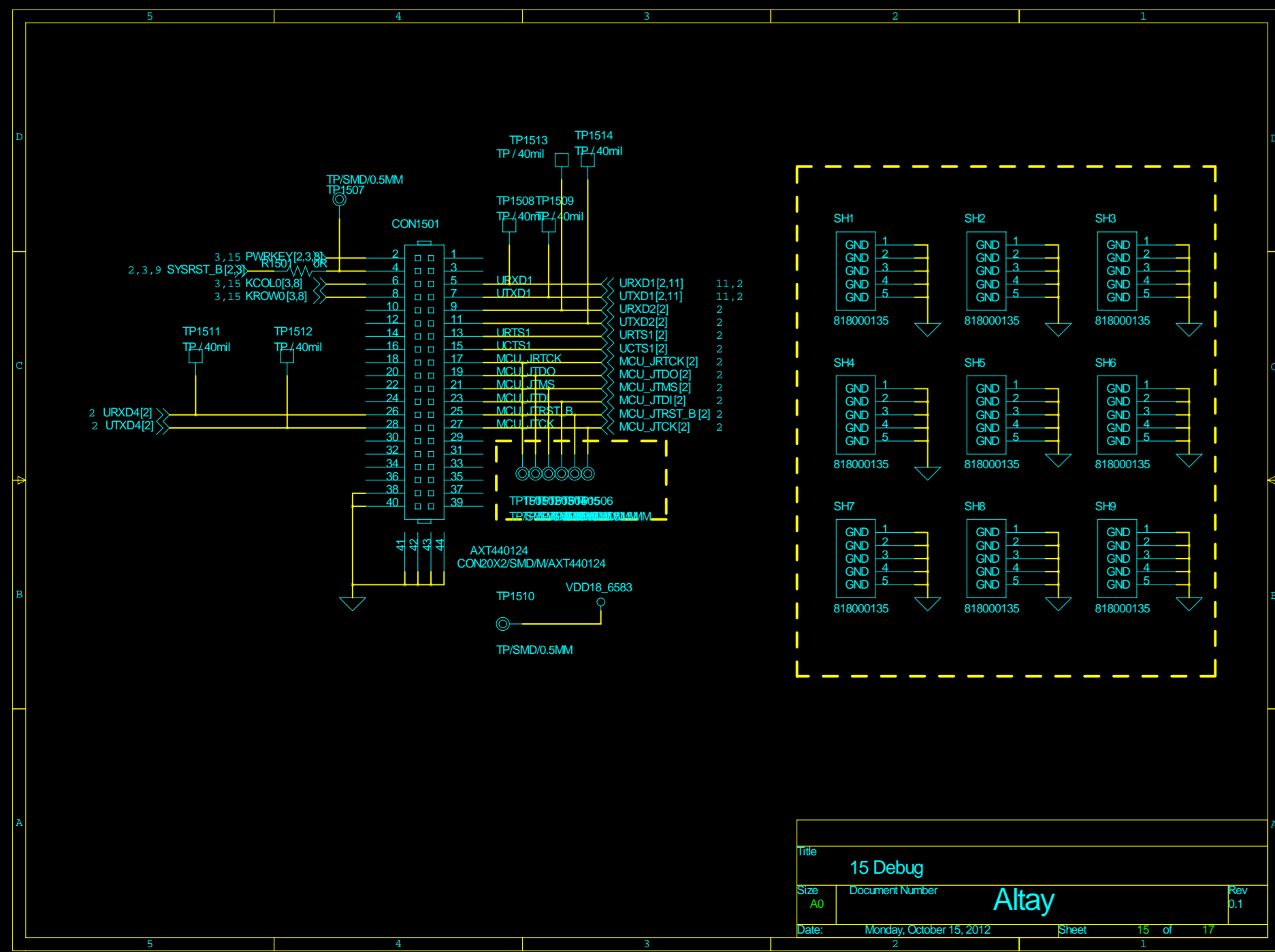




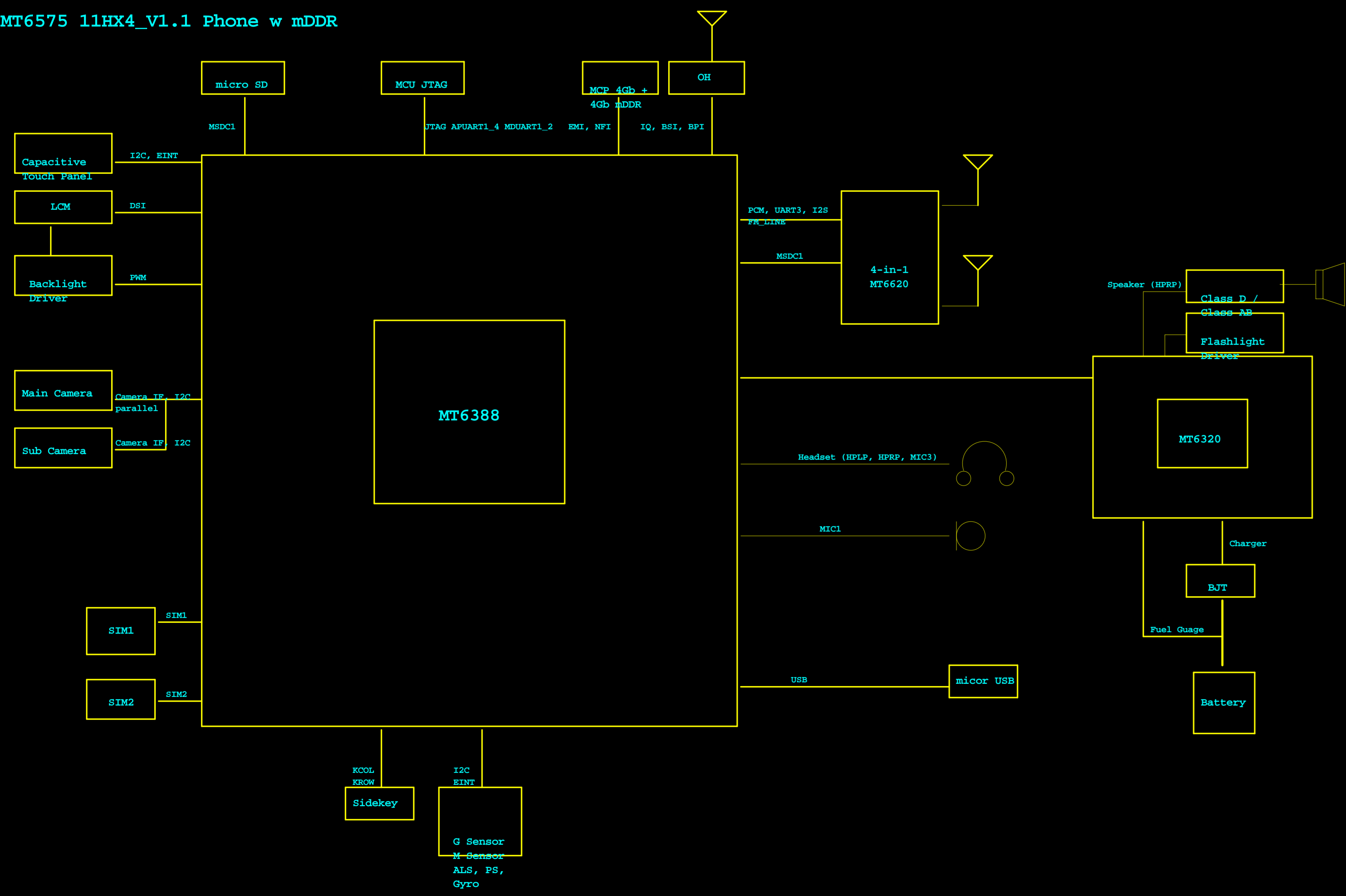


Switching Charger





MT6575 11HX4_V1.1 Phone w mDDR



Item Category	Description	SW Modification
V1.0 initial version		
V1.1		
1001	1001	1001
1002	1002	1002
1003	1003	1003
1004	1004	1004
1005	1005	1005
1006	1006	1006
1007	1007	1007
1008	1008	1008
1009	1009	1009
1010	1010	1010
1011	1011	1011
1012	1012	1012
1013	1013	1013
1014	1014	1014
1015	1015	1015
1016	1016	1016
1017	1017	1017
1018	1018	1018
1019	1019	1019
1020	1020	1020
1021	1021	1021
1022	1022	1022
1023	1023	1023
1024	1024	1024
1025	1025	1025
1026	1026	1026
1027	1027	1027
1028	1028	1028
1029	1029	1029
1030	1030	1030
1031	1031	1031
1032	1032	1032
1033	1033	1033
1034	1034	1034
1035	1035	1035
1036	1036	1036
1037	1037	1037
1038	1038	1038
1039	1039	1039
1040	1040	1040
1041	1041	1041
1042	1042	1042
1043	1043	1043
1044	1044	1044
1045	1045	1045
1046	1046	1046
1047	1047	1047
1048	1048	1048
1049	1049	1049
1050	1050	1050
1051	1051	1051
1052	1052	1052
1053	1053	1053
1054	1054	1054
1055	1055	1055
1056	1056	1056
1057	1057	1057
1058	1058	1058
1059	1059	1059
1060	1060	1060
1061	1061	1061
1062	1062	1062
1063	1063	1063
1064	1064	1064
1065	1065	1065
1066	1066	1066
1067	1067	1067
1068	1068	1068
1069	1069	1069
1070	1070	1070
1071	1071	1071
1072	1072	1072
1073	1073	1073
1074	1074	1074
1075	1075	1075
1076	1076	1076
1077	1077	1077
1078	1078	1078
1079	1079	1079
1080	1080	1080
1081	1081	1081
1082	1082	1082
1083	1083	1083
1084	1084	1084
1085	1085	1085
1086	1086	1086
1087	1087	1087
1088	1088	1088
1089	1089	1089
1090	1090	1090
1091	1091	1091
1092	1092	1092
1093	1093	1093
1094	1094	1094
1095	1095	1095
1096	1096	1096
1097	1097	1097
1098	1098	1098
1099	1099	1099
1100	1100	1100